

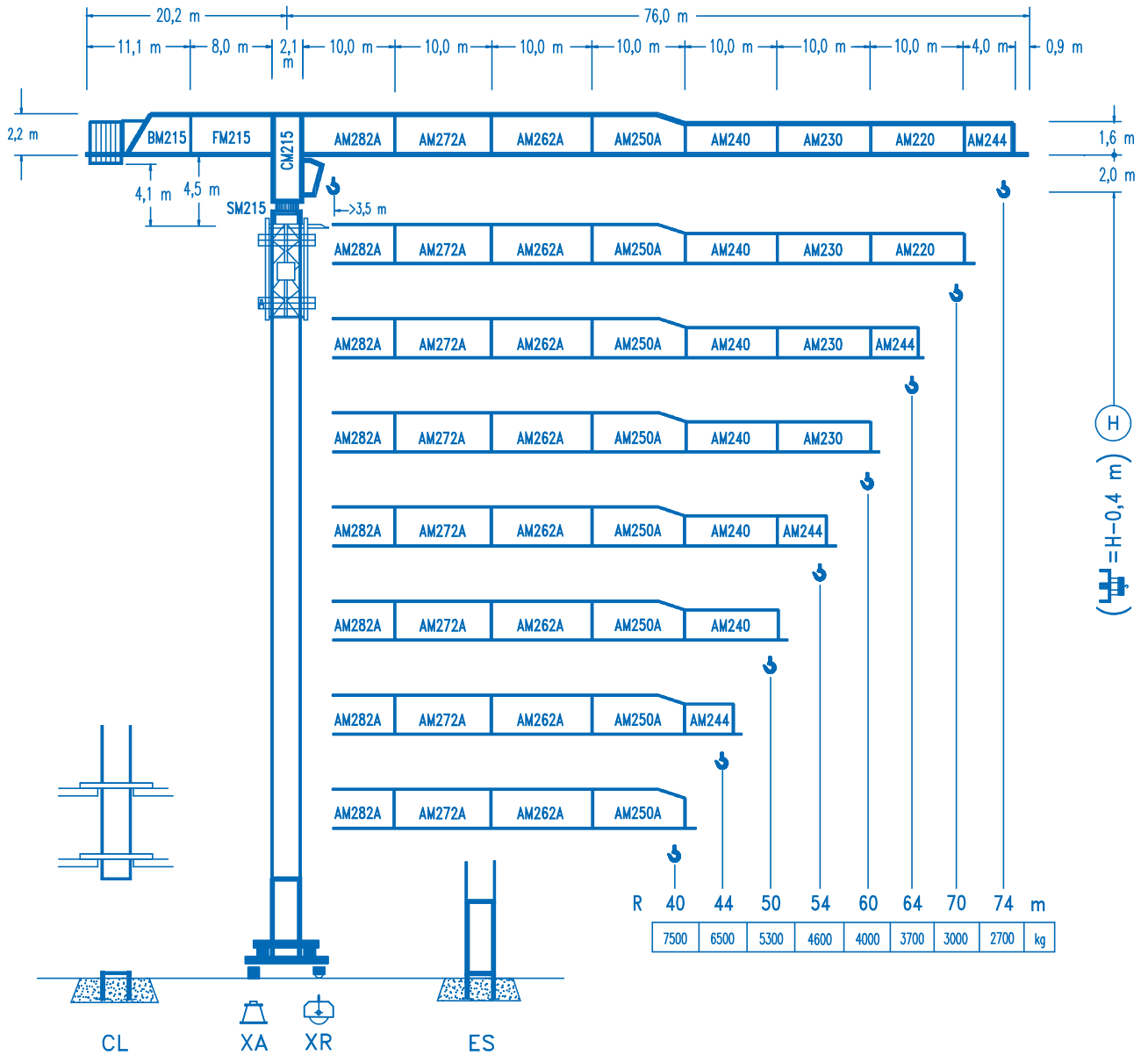


COMANSA

LINDEN 2100

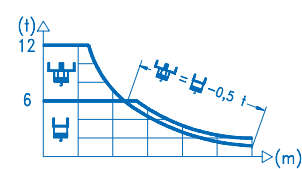
21 LC 290

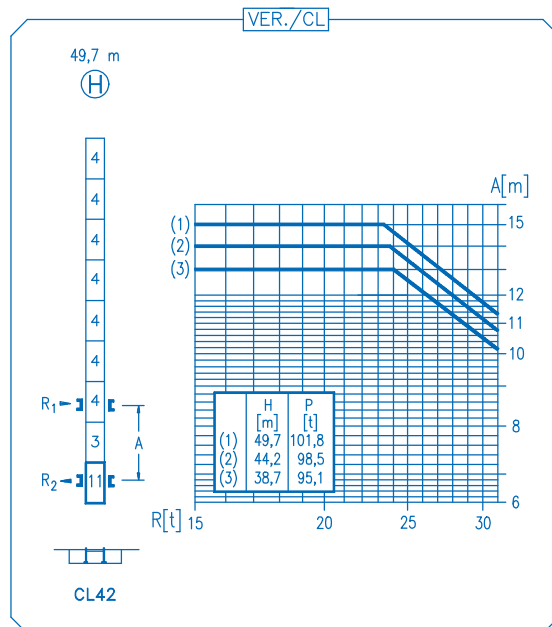
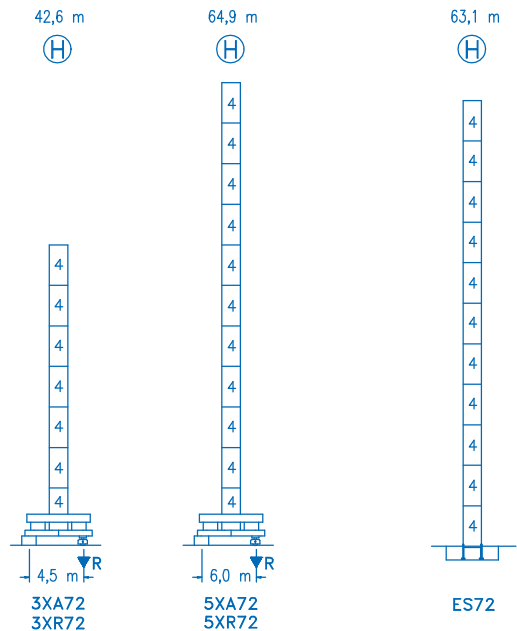
12 t



CE
DIN 15018 H1 B3

R	☐				☒									
74	20,2	25	30	35,9	37,3	40	44	50	54	60	64	70	74	m
	12000	9345	7500	6000	6000	5545	4980	4300	3930	3475	3220	2890	2700	kg
70	20,7	25	30	36,8	38,5	40	44	50	54	60	64	70	m	
	12000	9610	7720	6000	6000	5745	5155	4455	4075	3605	3340	3000	kg	
64	22,3	25	30	34	39,6	41,9	44	50	54	60	64	m		
	12000	10470	8430	7245	6000	6000	5685	4920	4505	3990	3700	kg		
60	22,1	25	30	34	39,4	42,0	44	50	54	60	m			
	12000	10390	8370	7195	6000	6000	5695	4930	4515	4000	kg			
54	22,3	25	30	34	39,8	42,7	44	50	54	m				
	12000	10500	8460	7275	6000	6000	5800	5020	4600	kg				
50	23,2	25	30	34	40	41,4	44,8	50	m					
	12000	11005	8880	7645	6265	6000	6000	5300	kg					
44		25,9	30	34	37	40	44	m						
		12000	10100	8715	7880	7170	6500	kg						
40		26,4	30	34	37	40	m							
		12000	10345	8930	8075	7500	kg							





R. máx.	En servicio In operation En service In Betrieb	3XR72 105,9 t
		5XR72 113,6 t

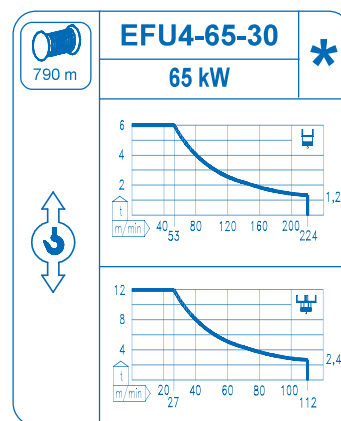
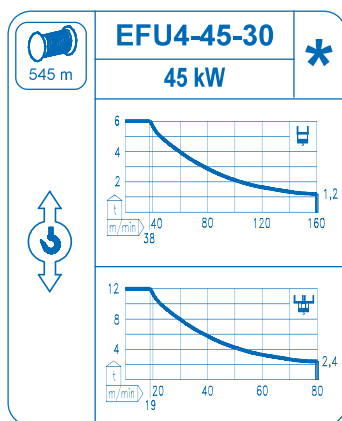
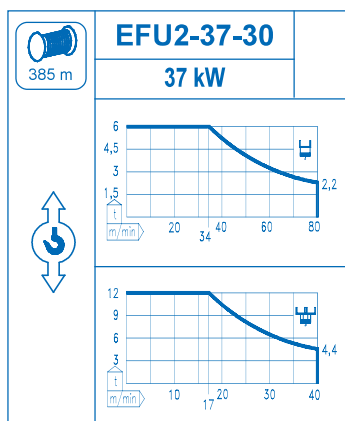
R. máx.	Fuera de servicio Out of service Hors service Ausser Betrieb	3XR72 90,3 t
		5XR72 150,3 t

CFU-7.5
7,5 kW
0 ⇄ 94 m/min

GR-12
3 x 120 Nm
0 ⇄ 0,7 rpm

TRA-7.5
2 x 75 Nm
0 ⇄ 20 m/min

TRA-7.5VC
2 x 75 Nm
0 ⇄ 20 m/min
5XR72



Tensión de alimentación Operating voltage Tension de service Betriebsspannung	400 V 3 ph 50 Hz
--	---------------------------------

Opcional Optional En option Kaufoption	*
---	----------